



## Collaborative Research

### Innovative

ROSALIND is a leading cloud-based platform that empowers researchers to analyze, interpret and collaborate on multi-omics data

### Collaborative

### Scaleable

### Actionable

### Secure



- Single Cell RNA-Seq
- RNA-Seq
- NanoString nCounter
- ATAC-Seq
- Chip-Seq

ROSALIND can help business stakeholders improve time to market through fast, repeatable and actionable data. Bioinformatics teams will amplify their impact by making data and analyses seamlessly available to the scientific teams that can aid in interpretation and guiding follow-on experiments. CIO's will have peace of mind knowing that ROSALIND is scalable, secure, and compliant.

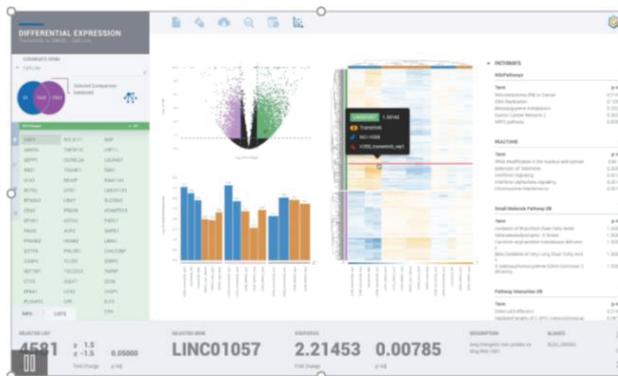
- Enterprise Grade Virtual Private Cloud Security
- HIPAA Compliant
- Data Center Certifications:
  - SOC 1/2/3, ISO 27001, ISO 27017/27018, PCI-DSS.
- Follows FAIR Principles

TO LEARN MORE, VISIT [WWW.ROSALIND.BIO](http://WWW.ROSALIND.BIO)

Scientists of every skill level can benefit from ROSALIND since no programming or bioinformatics skills are required. With powerful downstream analysis and collaboration, ROSALIND is a discovery platform and data hub connecting experiment design, quality control, and pathway exploration.

## Platform Features

- Integrated with 50+ Knowledge Bases
- Intelligent Quality Control
- Interactive Analysis
- Multi-omic Analysis
- Create Gene Lists
- Knowledge Graph and Search



## Extending ROSALIND's leadership to COVID-19

With the rapid emergence of SARS-CoV-2 variants, there is rising concern over the detection of new viral strains using the existing diagnostic assays. Diagnostic manufactures, governments, researchers, and large companies requiring employees to be tested all have a vested interest in understanding these variants. In collaboration with the United States National Institutes of Health's RADx initiative, ROSALIND launched its web-based platform for monitoring the emergence of SARS-CoV-2 variants and evaluating the effects on the performance of diagnostic tests. The ROSALIND Diagnostic Monitoring System [ROSALIND DxM] provides you a better way to identify and track these variants.

For more information on the DxM System and other RADx funded programs, visit: <https://www.nih.gov/research-training/medical-research-initiatives/radx>

TO LEARN MORE, VISIT [WWW.ROSALIND.BIO](http://WWW.ROSALIND.BIO)

 1 (855) 766-7267

 [info@rosalind.bio](mailto:info@rosalind.bio)

 [www.rosalind.bio](http://www.rosalind.bio)